

LARISSA HOTELS SUSTAINABILITY REPORT 2023



CONTENTS

Page02 - 05 About Sustainability

Page06 Sustainability Policy

Page07 Management's Call and Thanks to Sustainable Tourism Stakeholders

Page08 - 11 Environmental Awareness

Page 12 - 15 Some of Our Cultural Heritage in Antalya

Page16 - 18 What does Larissa Hotel do for the environment?

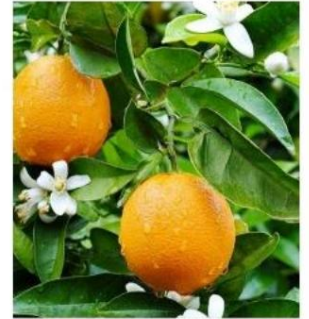
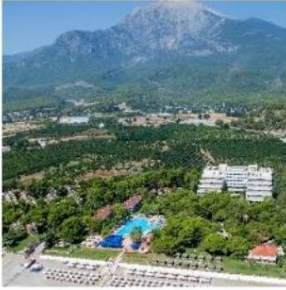
Page19 - 31 Our Sustainability Consciousness and 2023 consumption reports

L'HOTEL

LARISSA HOTELS

SUSTAINABILITY REPORT

2023



L'HOTEL
LARISSA HOTELS

FUN & SUN
CLUB SAPHÏRE

L'HOTEL
LARISSA HOTELS

CLUB AKMAN
PARK

L'HOTEL
LARISSA HOTELS

SULTAN'S
BEACH

L'HOTEL
LARISSA HOTELS

INN OTEL SÏDE BEACH²

L'HOTEL
LARISSA HOTELS

Sustainability;

It is the whole of activities carried out to protect natural resources while meeting today's needs and to leave a good environment for future generations.

sustainable development,

Sustainable development is achieved by establishing a balance between humans and nature;

It will enable future generations to meet their needs and develop without consuming natural resources.

In this way, it means programming the life and development of today and the future.

sustainable development,

Social, ecological, economic, spatial and cultural dimensions
It is a concept.

As Larissa Hotels,

We inform our stakeholders transparently and effectively about our activities and their impacts. Providing appropriate information is one of the issues to which we attach special importance .

As Larissa Hotels,

sustainable tourism and We are aware and determined of our responsibilities regarding development

"As We Protect Nature"

Nature also protects us.

Our corporate vision, mission, values and ethical principles cover these responsibilities.

It guides us while doing it.



REPORT ABOUT

For your requests/feedback

Serkan DOÿAN

Larissa Hotels

QUALITY MANAGEMENT SYSTEMS

coordinator



quality@larissahotels.com



As **LARISSA HOTELS** , we will be an

important tool to inform our stakeholders transparently and effectively about our sustainable tourism activities and their impacts , and to become a transparent and accountable organization with the sustainability reports we publish annually.

The main responsibilities of our hotels within the scope of sustainability are;

Its basic principles are : *Creating and evaluating recycling and reuse opportunities,

*Continuously improving energy efficiency and minimizing the negative impact caused by carbon emissions, *Reducing

any environmental impact caused.

*The liability of economic actors is not limited to this. Social and economic factors that form the basis of sustainability are at least as important as the environment.

Sustainability has a wide scope, from providing the most suitable conditions for employees to sharing the added value created with the society.

2023 sustainability report; *

Environmental, social and economic performance evaluation of our hotels, * Targets

determined to increase this performance, * Strategy and process to be followed to achieve these targets, * Possible risks and solution suggestions that may be encountered, *

Contributing to ecological balance, * Minimizing

the negativities and dangers that will affect the environment. and taking the necessary precautions,

*Efforts

to keep performance results at the highest level.

L'HOTEL

LARISSA HOTELS



LARISSA HOTELS

Fun&Sun Club Sapphire, Otium Club Akman Park, Sultan's Hotel, Larissa nn,
Larissa Club Side Beach

+ (90) 242 763 66 80

+ (90) 242 763 66 84

1 5 Star Hotel, 1 3 Star Hotel, 3 Simple Accommodation Hotels
Seasonal

www.larissahotels.com info@larissahotels.com

Explanation:

 Fun&Sun Club Sapphire Hotel: Our 5-star, 276-room facility provides service with an all-inclusive concept in the Tekirova region.  Larissa Sultan's

Hotel: Our 3-star, 137-room facility provides service with an all-inclusive concept in the amyuva region.

 Otium Club Akman Hotel: Our 149-room facility with simple accommodation status is located in amyuva. It provides service with an all-inclusive concept in the region.

 Larissa nn Hotel: Our 117-room facility with basic accommodation status is located in amyuva.

It provides service with an all-inclusive concept in the region.

 Larissa Side Beach Club: Our 323-room facility, which has a simple accommodation status, serves with an all-inclusive concept in the Side region.

Serkan DOAN
LARISSA HOTELS
QUALITY COORDINATOR

L'HOTEL
LARISSA HOTELS

FUN & SUN
CLUB SAPHİRE

L'HOTEL
LARISSA HOTELS

CLUB AKMAN
PARK

L'HOTEL
LARISSA HOTELS

SULTAN'S
BEACH

L'HOTEL
LARISSA HOTELS

INN OTEL SİDE BEACH

L'HOTEL
LARISSA HOTELS

5



SUSTAINABILITY POLICY

LARISSA HOTELS has adopted a sustainability approach in its production and service activities in order to protect the environment, improve the connection between the natural and social environment, support the local people and leave a more livable world to future generations.

LARISSA HOTELS sustainability approach; To use clean and renewable energy resources in all its activities, to ensure energy efficiency, to reduce carbon emissions, to use water economically, and to prevent waste and waste.

LARISSA HOTELS evaluates the current and future economic, social and environmental impacts of all activities.

It takes into consideration the needs of the guests, the industry, the environment and the people living in that region. It protects cultural and natural values in the destinations where it is located and creates employment.

Social, environmental and economic sustainability are areas that actively influence and are affected by each other, and together they provide efficiency.

Our sustainability policy;

- To make the sustainability perspective a company culture and to inform both employees and stakeholders in this field.
- To increase resource efficiency in our activities by effectively managing the use of energy and natural resources, products we use, taking into account our effects on the natural environment and biodiversity. In this regard, to minimize environmental impacts,
- Reducing greenhouse gases, with the products and services we produce, To create high added value to the tourism sector
- Protecting natural and cultural heritage
- Reporting discrimination based on religion, sect, language, race, color, gender, marital status, political opinion, age, physical disability and similar reasons, to ensure equality regardless of health of our employees and stakeholders, Prioritizing the occupational safety and cooperation to ensure that people with different beliefs, thoughts and opinions work together without entering into conflict.
- To create supportive, positive and harmonious working environments,
- To produce projects or support such projects for the development of the regions where the hotels are located, to increase the welfare level of the society, to advance economically and socially, to act with social responsibility awareness and to contribute to the development of the society,
- Raising awareness by supporting employees to volunteer for social and community activities in which they can take part to create,
- To comply with relevant legal responsibilities and national and international standards in our activities,
- Increasing our sustainability performance by establishing close relationships with our suppliers,
- To regularly share our sustainability practices with our stakeholders in transparency,
- Providing sufficient human, technological and financial resources to achieve sustainability goals and using these resources to use optimally,
- To constantly review and improve sustainability performance.





**Dear Guests, Business Partners and Employees, As
LARISSA HOTELS,**

we are aware of the responsibilities brought by sustainable tourism, where sustainability efforts in tourism minimize the negative effects on environmental and cultural heritage. We strive to leave a better world for future generations.

With the awareness we have, we aim to improve our overall efficiency, quality and environmental performance by providing quality and human health-safe products and services for our guests.

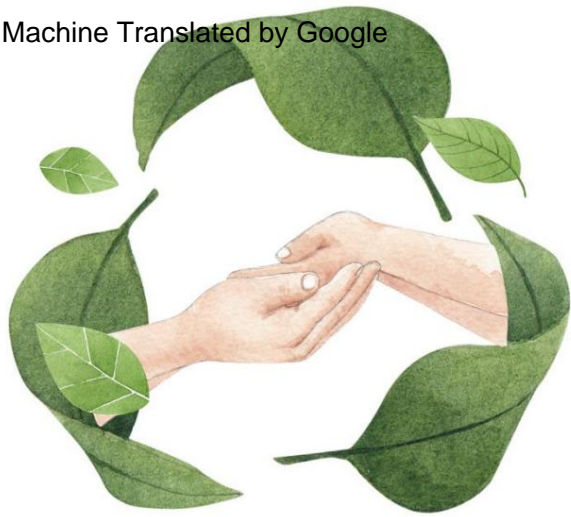
We include performance indicators related to our work in our goals and make them a part of our management system. We aim to constantly improve the service quality we provide to our guests, maximize the level of satisfaction, support the protection of natural life by increasing environmental awareness, prevent accidents and dangerous situations by ensuring the safety of our guests and employees, and achieve perfection in food safety and service understanding.

As LARISSA HOTELS, our corporate values that we emphasize show the importance of responsible and sustainable tourism. We focus on effectively managing sustainability risks and ensuring sustainable growth with long-term strategies, and thus aim to increase our success day by day.

Informing our stakeholders transparently and effectively about our activities and their impacts is one of the issues to which we attach special importance. In this regard, the sustainability reports we publish annually will be an important tool that we use to become a transparent and accountable organization.

We are wholeheartedly committed to growth targets focused on "A sustainable world, Sustainable tourism".

I would like to express my sincere gratitude to our valued employees, business partners and our guests who always trust our understanding of service, for making LARISSA HOTELS, which makes a difference and takes pride in the difference it creates, to reach its current position.



LARISSA HOTELS

ENVIRONMENTAL AWARENE



There are two worlds before us that
we will leave to future generations .

Is it a good future?

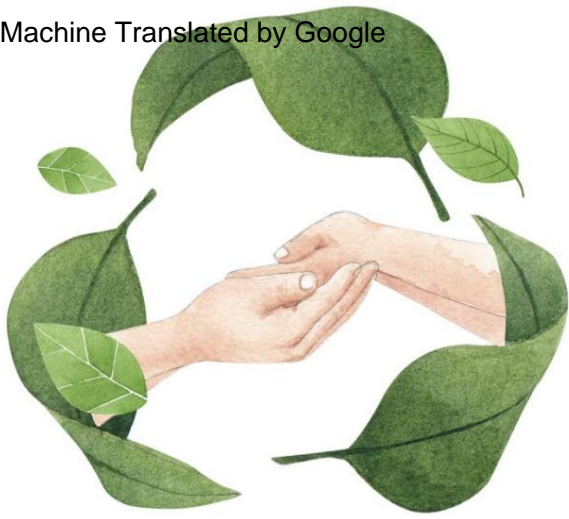
A scary future?



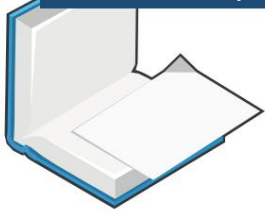
As Larissa hotel management,
we are aware of this...



We strive to raise
awareness of our
employees through training on
sustainability for a beautiful
future .



PAPER / CARDBOARD WASTES



- adverbs
- Tetrapaks
- Books
- cartons
- brochures
- Newspapers

GLASS WASTES



- Beverage Bottles
- Canning and marmalade glasses
- window panes



METALATICS

- Parts with oil wiped off
- aluminum foils
- Metal lids
- Beverage and canned cans
- spray cans

PLASTIC WASTES



- All plastics marked PET, PE, PVC, PP, PS
- Empty - clean plastic boxes
- Shampoo / Detergent containers (clean inside)





LARISSA HOTELS IS ENVIRONMENT-FRIENDLY, BECAUSE;



Respectful and sensitive to the environment,

It contains and protects different species of plants and animals,

It prepares practices for the economical use of towels on the beach and in rooms in order to reduce the amount of waste water and protect the environment. It is an active supporter of the World Waste Soap Project due to environmental awareness,



It uses LED lighting system and energy-saving bulbs,

It decomposes all garbage and contributes to the protection of nature,

Ensures that hazardous waste is collected and disposed of appropriately in order to prevent harm to nature ,



It collects waste vegetable oils to prevent soil, environment and water pollution, and **organizes activities to promote nature and raise environmental awareness in the Mini Club.**

It uses solar energy within the scope of energy saving,
It saves energy by using natural energy sources,





TO HELP US PROTECT THE ENVIRONMENT,
PLEASE NOTE:



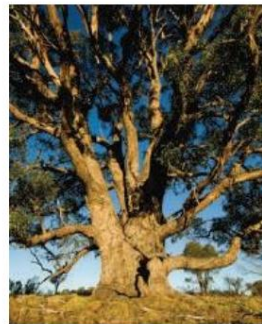
Throw your garbage in the trash can instead of the toilet . Help us save more water for the future of the world .

We pay utmost attention to energy saving in our hotel. When leaving your room, please remove the room card from the energy unit. Support us in using energy resources economically for the future of the world.



We would like to point out that in order to protect energy resources in nature, the heating and cooling system is automatically turned off when the balcony door is opened.

SOME OF OUR OTHER TREES IN OUR GARDENS



- Australia
- Rubber Tree
- Avocado Tree
- Cyprus Acacia
- Stone Pine
- Iron Tree
- Mulberry Tree
- Manolia Tree
- Rosary Tree
- Citrus Tree
- Jacaranda Tree
- Orange Tree
- Lemon Tree
- Tangerine Tree
- Palm Tree
- Date Tree
- Eucalyptus Tree
- Dwarf Fenix Tree
- Bottle Tree
- Grevillia Tree
- Red Pine 11



FROM OUR CULTURAL HERITAGE SOME



Phaselis Ancient City - Antalya

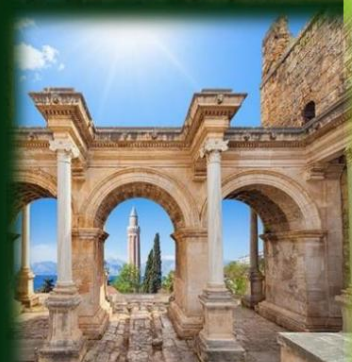
It is said that the Ancient City of Phaselis was founded by colonists from Rhodes in the 7th century BC on a small peninsula extending into the Mediterranean . The founding legend tells that the colonists responded to local people's suggestions for corn or dried fish with requests for fish. Its geographical location shows that it is an important port city. It has three ports, one in the north of the peninsula, the other in the northeast and the third on the southwest coast. Its ports, agoras and ship depictions on city coins emphasize Phaselis' commercial port identity.



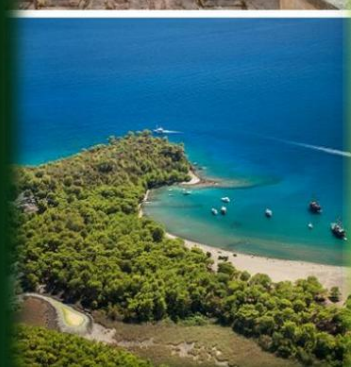
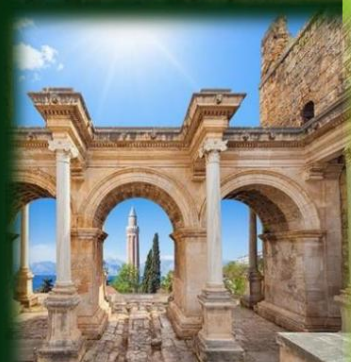
phaselis



phaselis



FROM OUR CULTURAL HERITAGE SOME



Perge Ancient City - Antalya

The basis of Perge's city plan consists of two main streets, one extending in the east-west direction and the other in the north-south direction. The theater with a capacity of 15 thousand spectators is very well preserved. The artifacts found here are today exhibited in the Antalya 'Perge Theater Hall' constantly in Museum . The perfection of these sculptures beautifully reflects the uniquely styled school of Perge sculpture. The stadium, which is another basic structure of the Ancient City of Perge, is one of the best preserved stadiums in Turkey.

Other social and cultural structures that reflect the grandeur of the city in ancient times include the rectangular planned agora, high towers, monumental fountains, baths and columned streets. Perge is also important for Christianity. St. Paul, one of the most important figures of Christianity, arrived in Perge via the Aksu River during his missionary travels.



perge



perge



FROM OUR CULTURAL HERITAGE SOME



THE HOUSE OF THE GODS:

OLYMPUS, THE CITY OF UNEXTINGUISHED FIRE

Olympos, which means "high mountain", is also described as the "city of everlasting fire". This fire, which is the subject of famous legends, takes its source from "Chimaera", also known as "Yanartağ".

The acropolis of Olympos, where the theater, basilica and bath structure of the Classical Roman period are located; The high hill above the graves that can be seen from the beach. The building ruins in the acropolis belong to the walls shaped like a castle in the Middle Ages.

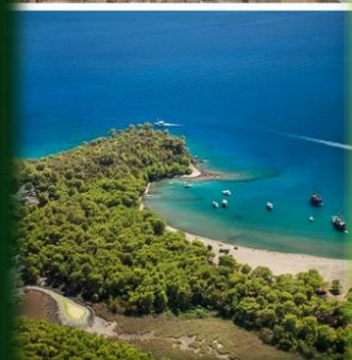
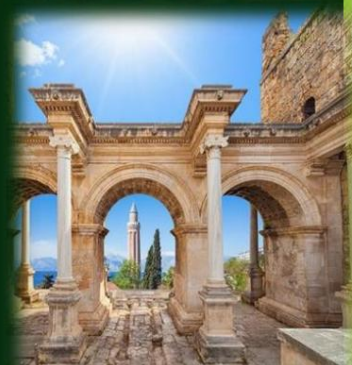
The most interesting among the ruins of this ancient city is the "sarcophagus of Captain Eudomus", unearthed during the excavations of the Antalya Museum. The most important one is the Byzantine Church, whose interior walls are decorated with frescoes here and there.



Olympos



Olympos



FROM OUR CULTURAL HERITAGE SOME

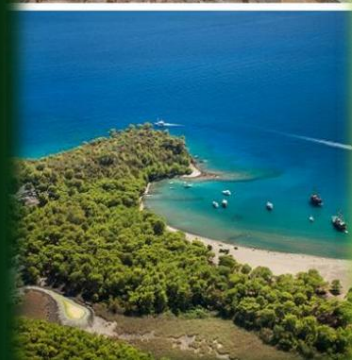
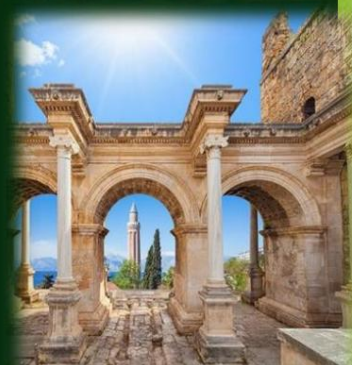


Aspendos Ancient City with a capacity of 15-20 thousand people

The Theater is the most intact
Ancient Theater from the Roman Civilization period.
It is still being shown



10 thousand people a year in Köprülü
Canyon, the largest canyon in Turkey.
nearby local and foreign touristsrafting
is doing.





OUR ENVIRONMENTAL AWARENESS





OUR ENVIRONMENTAL AWARENESS

Larissa Hotels environmental policy, environmental awareness and targets have been standardized in line with national and local government opportunities . This is the work carried out with all facility employees, under the leadership of the Quality Management Systems Manager, in order to protect and maintain natural resources:



SAVING WATER AND ENERGY



- Larissa HOTELS water installation is connected to the city network.
- Periodic checks to prevent water loss
- Automatic irrigation systems
- Tap systems that reduce water consumption
- Towel change only upon guest request

- Linen change only upon guest request or in case of urgent need.
- Water saving systems in public toilets
- Energy stopper in guest areas
- Water heating with solar energy
- Use of energy-saving lighting



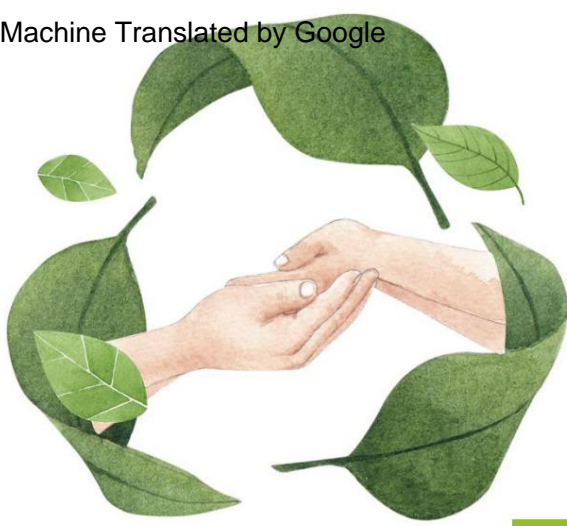
WASTE MANAGEMENT



- Bulk purchases
- Purchasing concentrated products
- Not buying disposable packaged foods
- Recyclable packaging
- Used frying oils are licensed to dispose of with companies
- Reducing the use of aluminum foil

- Plates, glasses, etc. avoid one-time use materials, instead of hard plastic (PE)
- Proper disposal of battery hazardous materials (paint, oils, fluorescent, etc.)
- Separation of paper, plastic, textile, metal, glass and porcelain garbage
- Garbage volume measurement reports





OUR ENVIRONMENTAL AWARENESS

Larissa Hotels environmental policy, environmental awareness and targets have been standardized in line with national and local government opportunities. This is the work carried out with all facility employees, under the leadership of the Quality Management Systems Manager, in order to protect and maintain natural resources:

POLLUTION REDUCTION AND CONTROL

- Regular water analysis (drinking water, pools, sea water and taking action activities when necessary)
- Use of ecological chemicals wherever possible.
- Electric charging station on-site to reduce carbon emissions

- Use of water-based paint wherever possible
- On-site waste separation
- Repair and use of goods and equipment to the fullest extent.
- Avoiding waste.
- Fruit trees within the facility



INFORMING GUESTS AND ACTIVITIES

- Environmental brochure stating our environmental activities
- Waste classification writings in all areas
- Environmental activities in the Kids Club program



- Environmental survey conducted to our guests
- Cooperation with local and general environmental organizations
- Periodic trainings for staff



SUSTAINABILITY

OUR CONSCIOUSNESS



Researching and reducing our impact on the environment

Reducing the amount of waste and bringing waste into the economy

To promote, protect and preserve our cultural heritage

SUSTAINABILITY
OUR CONSCIOUSNESS

Making efforts to protect biological diversity

We raise conscious individuals through training.

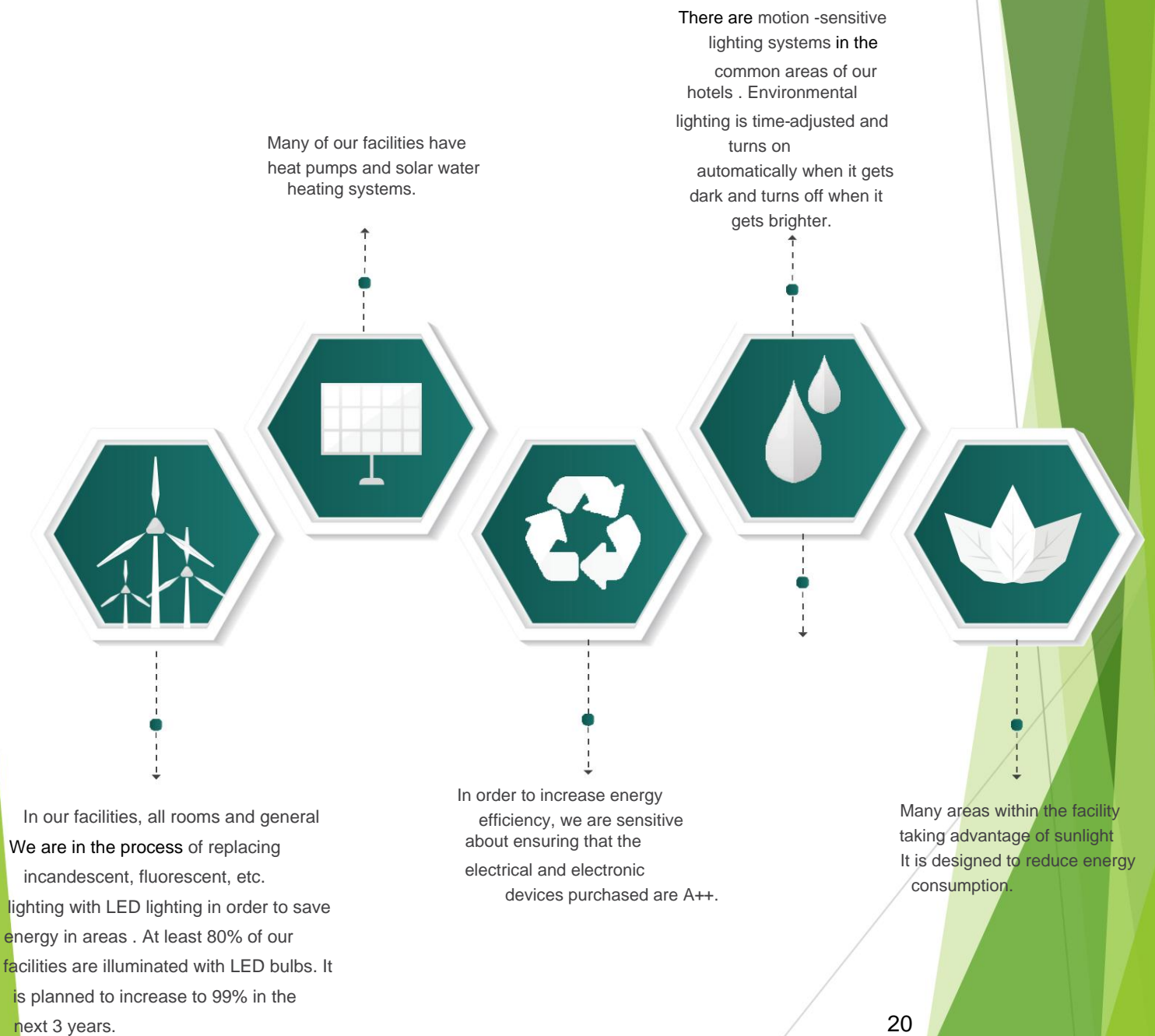
Ensuring economic development by supporting local suppliers

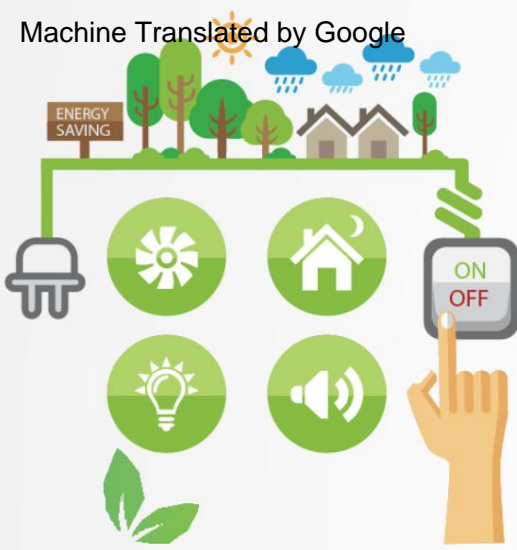




ENERGY-SAVING...

We ensure that all electronic products we purchase are energy efficient. We aim for all our employees to receive training on energy saving. The following studies regarding energy saving are carried out in our facility and their continuity is ensured.





ENERJİ TASARRUFU



By performing maintenance and cleaning of all electrical devices at regular intervals, Energy losses are minimized.



Cold unit, freezer, ice machines and
The wicks and gaskets of the ovens should be checked periodically.
They are checked and worn ones are replaced.



In cooling rooms and in general areas of the cooling system, terraces, gardens, etc. Cooling air curtains are used on the doors opening to the areas .



Convectional stoves are preferred instead of traditional stoves.



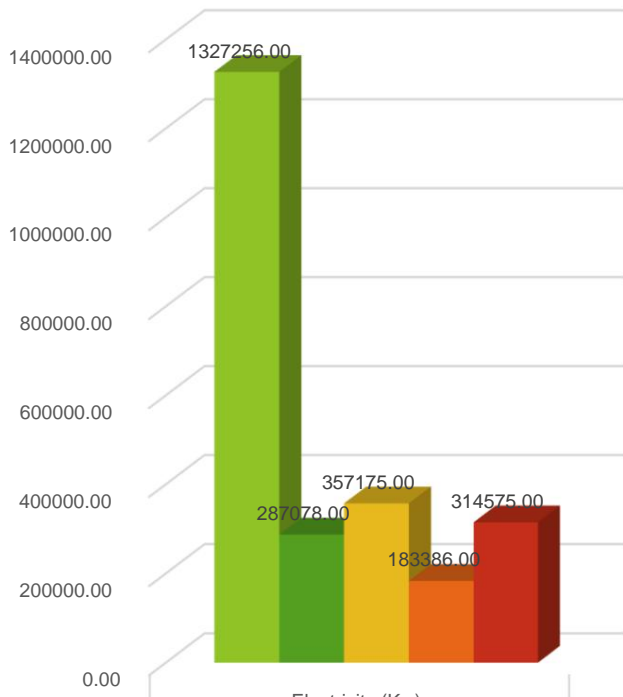
Instructions for use of devices used in the kitchen and laundry are hanging.



Warning signs are hung in rooms and public areas to encourage our guests to save electricity.



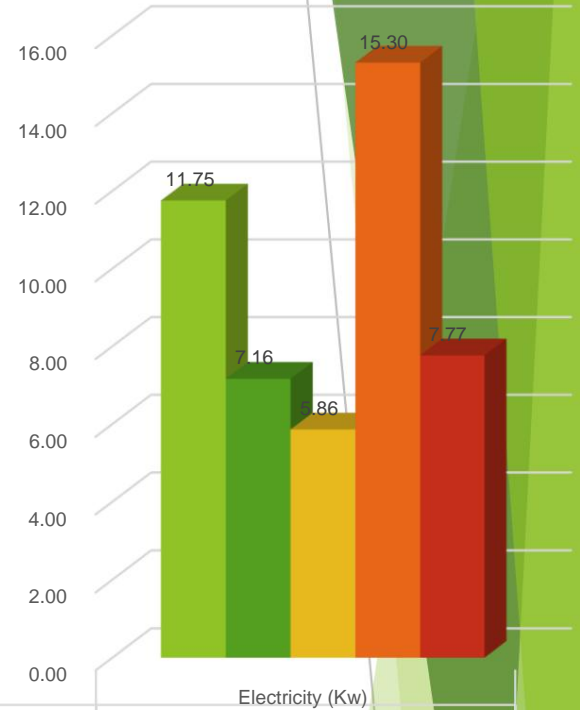
2023 ELECTRICITY CONSUMPTION (KW)



	Electricity (Kw)
FUN SUN SAPHIRE	1327256.00
OTIUM AKMAN	287078.00
SULTAN BEACH	357175.00
LARISSA IN	183386.00
SyDE BEACH	314575.00

■ FUN SUN SAPHIRE ■ OTIUM AKMAN ■ SULTAN BEACH
■ LARISSA IN ■ SyDE BEACH

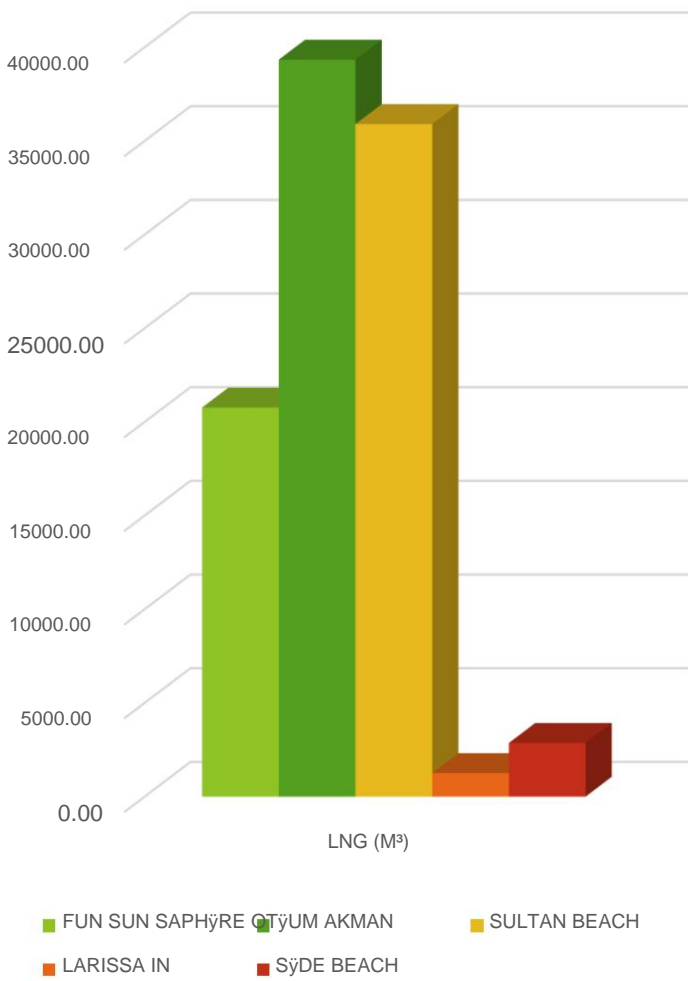
2023 PER ACCOMMODATION ELECTRICITY CONSUMPTION (KW)



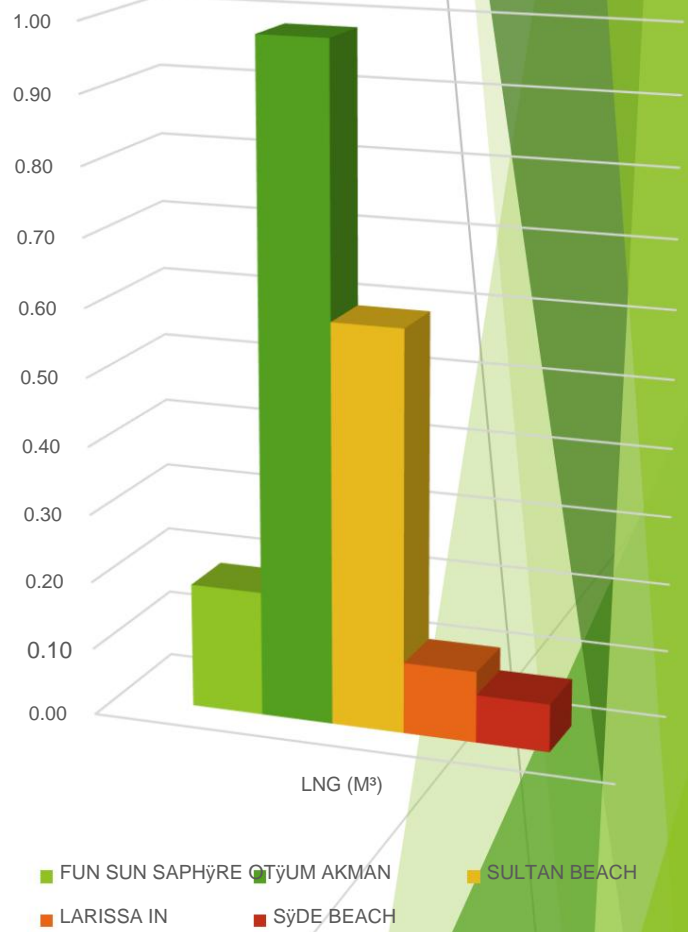
	Electricity (Kw)
FUN SUN SAPHIRE	11.75
OTIUM AKMAN	7.16
SULTAN BEACH	5.86
LARISSA IN	15.30
SyDE BEACH	7.77

■ FUN SUN SAPHIRE ■ OTIUM AKMAN ■ SULTAN BEACH
■ LARISSA IN ■ SyDE BEACH

2023 LNG CONSUMPTION (M 3)



2023 PER ACCOMMODATION LNG CONSUMPTION (M 3)

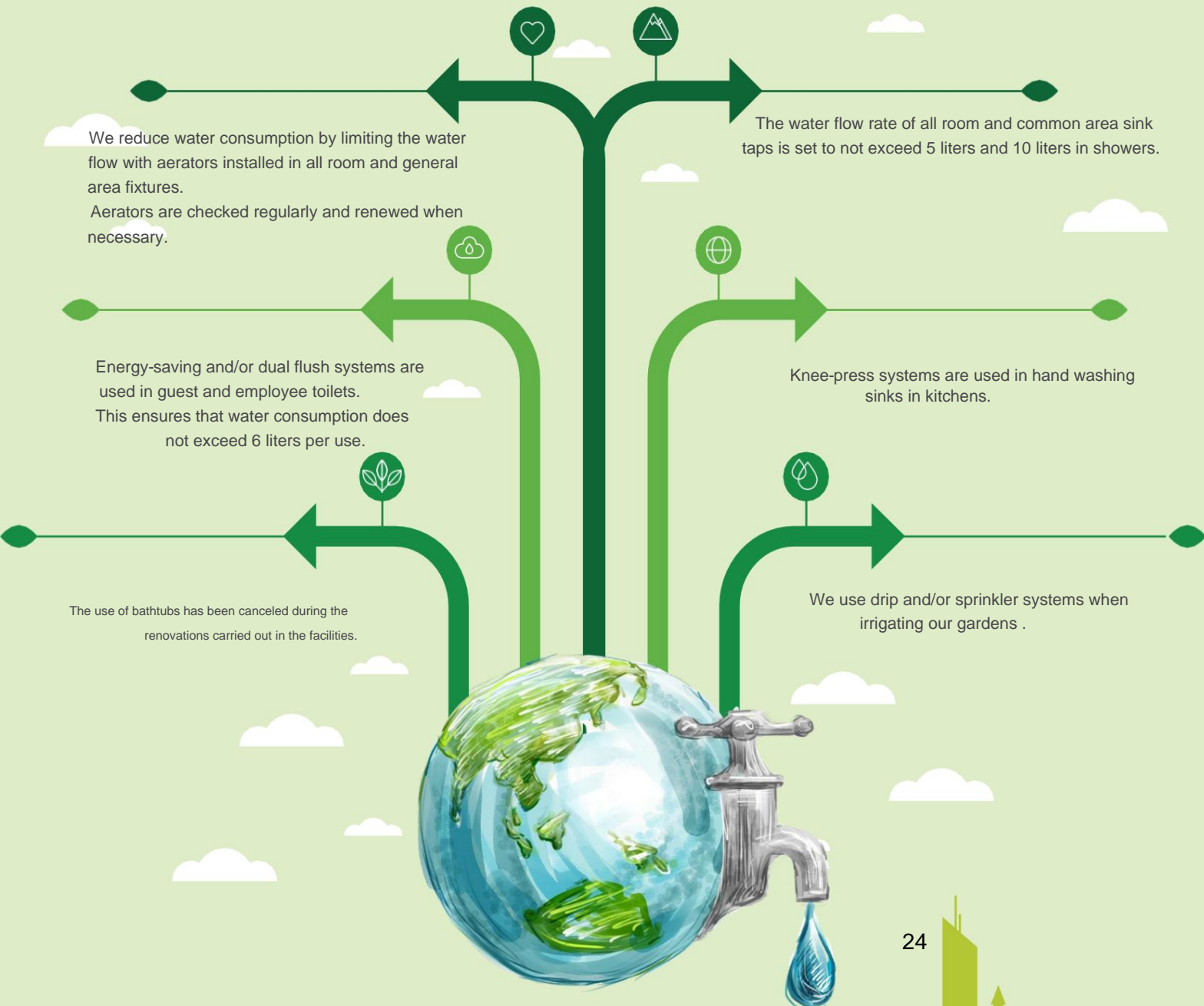


SU TASARRUFU

It uses water-saving equipment to reduce overall water consumption without compromising health, hygiene and guest satisfaction;

We put informative labels in guest rooms, including water saving, and We share our sensitivities and activities.

The following activities regarding water saving are carried out in our hotels and their continuity is ensured:



SU TASARRUFU



Our guests were informed about the use of towels on the 2nd day to reduce water consumption and support was requested.



Our employees are trained on the correct use of water and reporting any leaks.



Wastewater is connected to the sewer system in accordance with the discharge regulations.

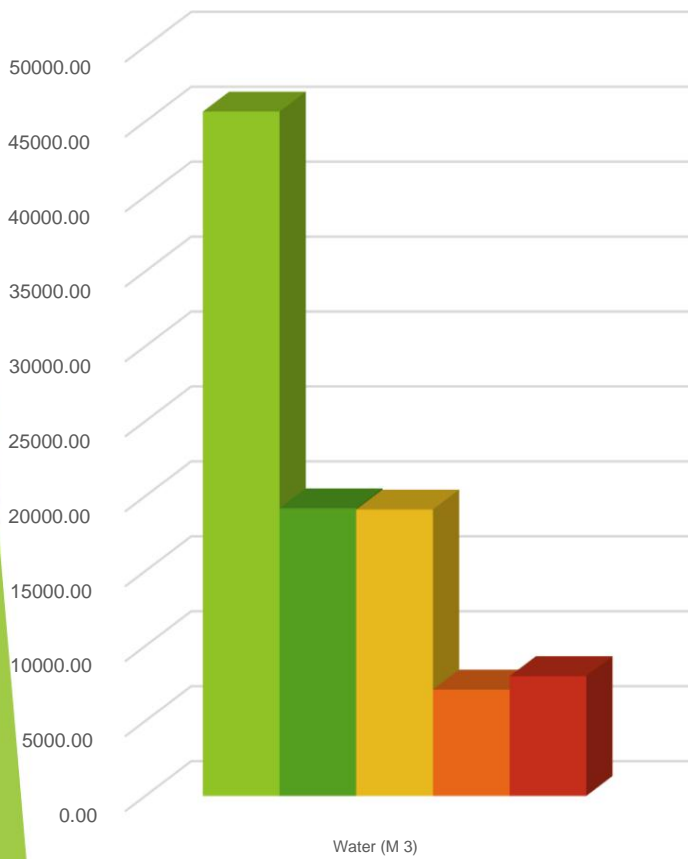


Kitchen and F&B staff use washing sinks when washing fruits and vegetables.



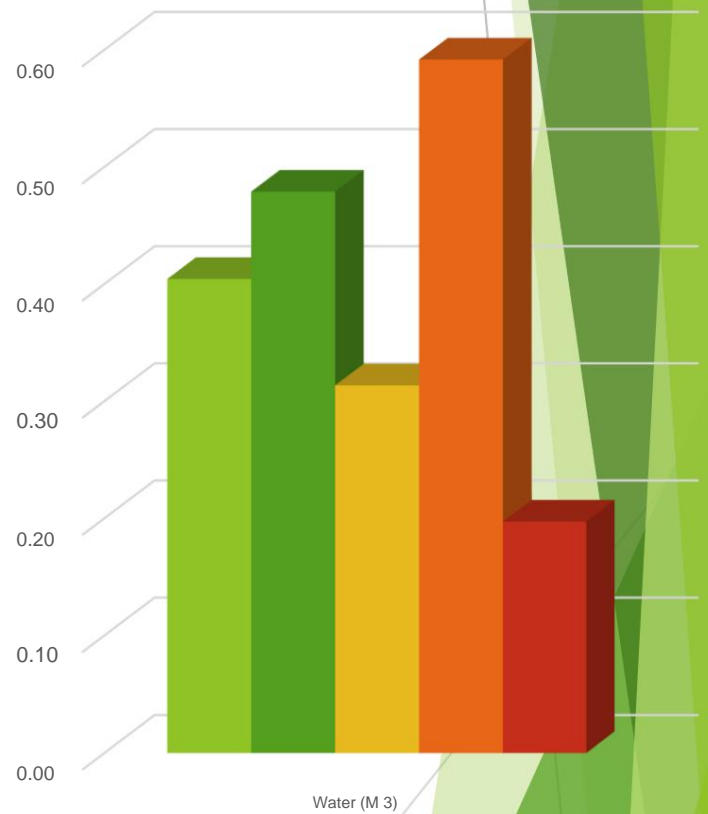


2023 WATER CONSUMPTION (M 3)



■ FUN SUN SAPHYRE ■ TYUM AKMAN ■ SULTAN BEACH
■ LARISSA IN ■ SYDE BEACH

2023 PER ACCOMMODATION WATER CONSUMPTION (M 3)



■ FUN SUN SAPHYRE ■ TYUM AKMAN ■ SULTAN BEACH
■ LARISSA IN ■ SYDE BEACH



ATIK YÖNETİMİ



We are aware that waste is recyclable.

We are doing the necessary work to raise the awareness of all employees and guests.

To reduce the amount of waste; Beverage units have been installed instead of single-use (metal cans, bottles, plastic) drinks.

To reduce the amount of waste; Disposable breakfast products (jam, butter, honey, etc.) are served with washable materials by purchasing large packaged products.

In order to reduce paper consumption, correspondence, documents, records and announcements are stored and transmitted digitally as much as possible.

We try to include our guests and employees in the recycling program to reduce our waste products at the source .



We separate the waste generated at the facility on site and deliver it to licensed waste collection and recycling companies.

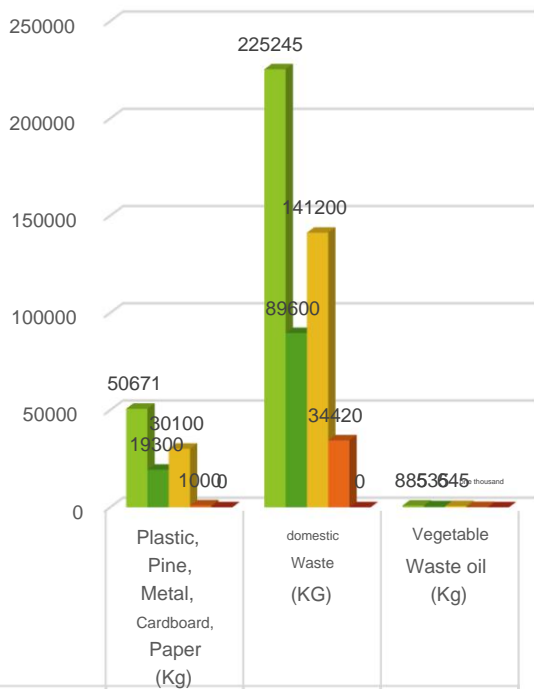


Our technical team maintains and repairs the equipment and items in the facility within the maintenance plan and extends their lifespan.

They try to use those that have completed their useful life in different areas. For example: making a coffee table from wooden doors.



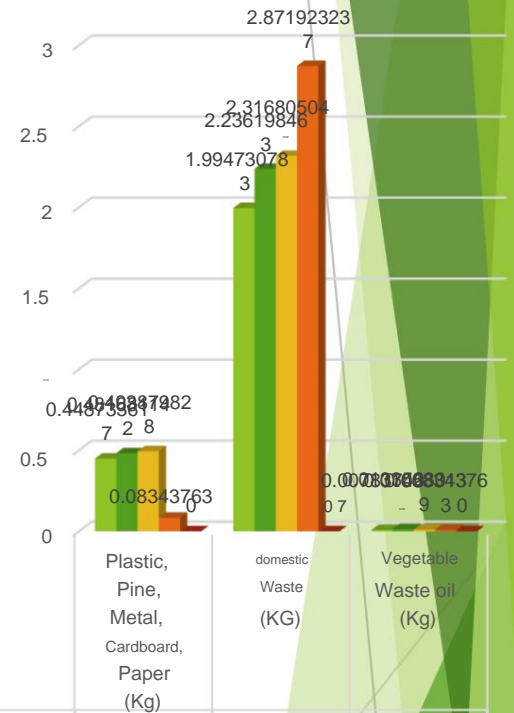
2023 TOTAL WASTE PRODUCED
AMOUNT (KG)



FUN SUN SAPHİRE	50671	225245	885
OTIUM AKMAN	19300	89600	535
SULTAN BEACH	30100	141200	645
LARISSA IN	one thousand	34420	one hundred
SİDE BEACH	0	0	0

■ FUN SUN SAPHİRE
 ■ OTIUM AKMAN
 ■ SULTAN BEACH
■ LARISSA IN
 ■ SİDE BEACH

WASTE GENERATION PER
ACCOMMODATION (KG) in 2023



FUN SUN SAPHİRE	0,4487336171	2,2871923237	0,00885343763
OTIUM AKMAN	0,4816811422	2,2361984630	0,013352301
SULTAN BEACH	0,4938798282	2,3168050410	0,010583139
LARISSA IN	0,08343763	2,8719232370	0,008343763
SİDE BEACH	0	0	0

■ FUN SUN SAPHİRE
 ■ OTIUM AKMAN
 ■ SULTAN BEACH
■ LARISSA IN
 ■ SİDE BEACH



CHEMICAL USE



We use chemicals in many areas of our lives. It is especially important in terms of hygiene. However, using too much can be dangerous both in terms of health and environmental damage. Examples include chemicals (paint, thinner, air conditioning gas, etc.) used by the technical team in maintenance and repair in the disinfection of hygiene areas in our facility (kitchen, toilet, pool water conditioning, etc.). It is extremely important to use appropriate dosages of chemicals to minimize the impact on the environment . For this;



*Automatic dosing system for cleaning chemicals is used in dishwashers.



*Pool conditioning chemicals work with an automatic dosing system,



*The chemicals purchased are purchased in large packages such as 10lt/20lt and transferred to small packages for use (liquid soap dispenser, spray bottles, etc.).

*Use of ozone instead of chlorine for disinfection of vegetables and fruits in the kitchen .

*Efforts to use concentrated chemicals as much as possible.

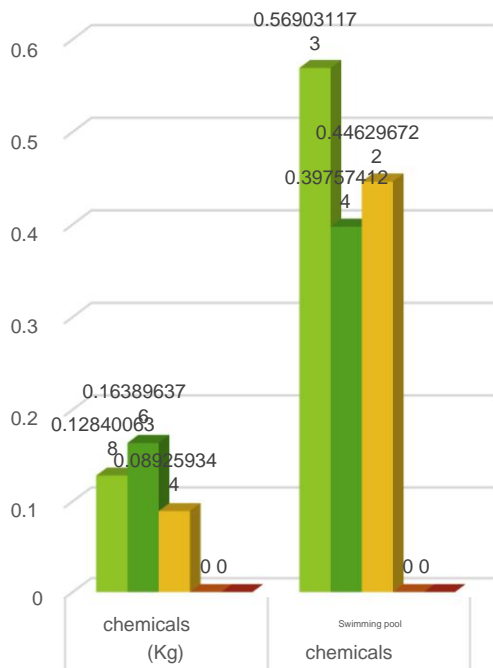
*Selecting chemical manufacturers from environmentally friendly companies that have an environmental management system such as ISO 14001.

***Chemical use training is provided to personnel.**

*We work with companies that specialize in pest control and comply with legal regulations.



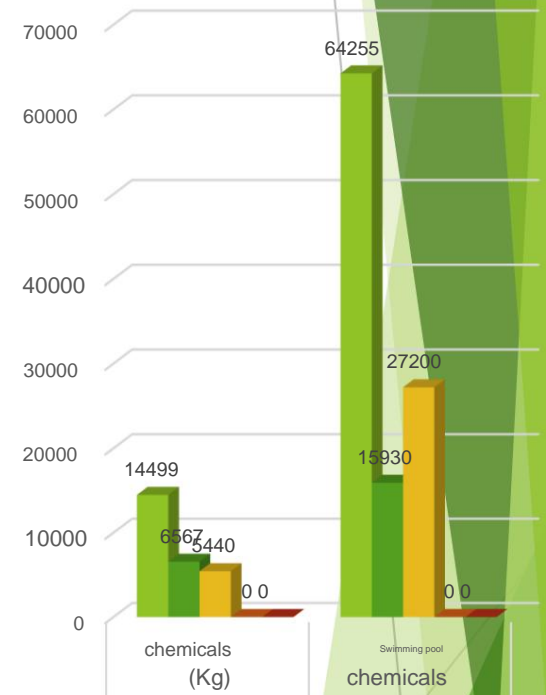
2023 PER ACCOMMODATION CHEMICAL CONSUMPTION



FUN SUN SAPHIRE	0,128400638	0.569031173
OTIUM AKMAN	0.163896376	0.397574124
SULTAN BEACH	0	0.446296722
LARISSA IN		0
SyDE BEACH	0	0

■ FUN SUN SAPHIRE ■ OTIUM AKMAN ■ SULTAN BEACH
■ LARISSA IN ■ SyDE BEACH

2023 CHEMICAL CONSUMPTION



FUN SUN SAPHIRE	14499	64255
OTIUM AKMAN	6567	15930
SULTAN BEACH	5440	27200
LARISSA IN	0	0
SyDE BEACH	0	0

■ FUN SUN SAPHIRE ■ OTIUM AKMAN ■ SULTAN BEACH
■ LARISSA IN ■ SyDE BEACH

PROTECTING NATURAL LIFE

Studies are carried out regarding the protection, health, care and nutrition of wild or domestic animals in the environment.

To prevent thousands of trees in our facilities from being damaged in case of fire, studies are being carried out. In this context,

- Our employees have been given fire training.
- Fire intervention devices are periodically maintained.
- Emergency teams have been established
- Fire drills were organized.



Cleaning of sea water is one of the issues we prioritize within the scope of sustainable tourism. comes first.



In this context, there are sufficient number of garbage bins and waste containers on the beach, and they are collected regularly.

We empty it and keep it clean. In order to make our beaches cleaner, we provide training to our beach attendants and check the cleanliness of the beaches.



As part of the World Environment Day celebrations, children's clubs in each of our facilities provide children with activities such as planting flowers, collecting waste, and making activities from packaging waste. Efforts are made to contribute to the development of environmental awareness from an early age.



We prefer endemic plant species in our facilities.



We benefit from natural resources with the solar panel we have within the facility and make an effort to reduce carbon emissions into nature.

Environmental training is provided to our employees in line with the annual training programs .

Trainings; reducing the consumption of natural resources, Reducing and correctly separating leaks, what to do about dangerous leaks, It includes issues related to protecting productivity and natural resources.

With the support of our guests, we take care of our small animal friends and carry out veterinary checks. We follow the spacing and neutering of our cats with their report cards. We publish adoption ads for newborn kittens and help them find homes.



L'HOTEL

LARISSA HOTELS



As Larissa Hotel's Green Road team , we are taking steps for a green future.



We expect the support and understanding of our valued stakeholders .

LARÿSSA HOTEL'S MANAGEMENT BOARD